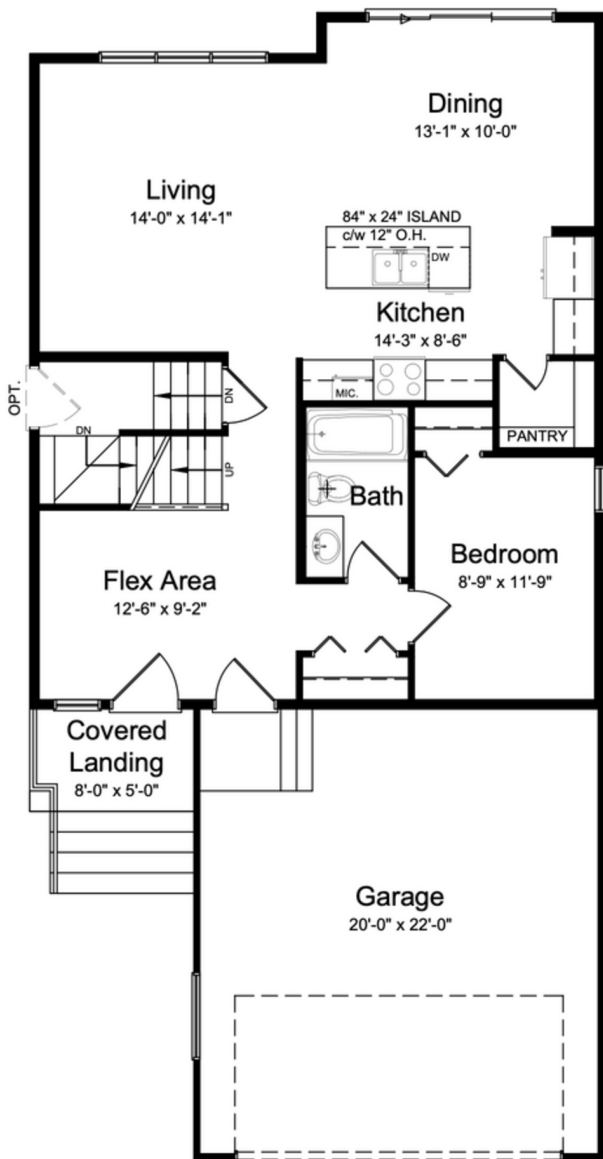




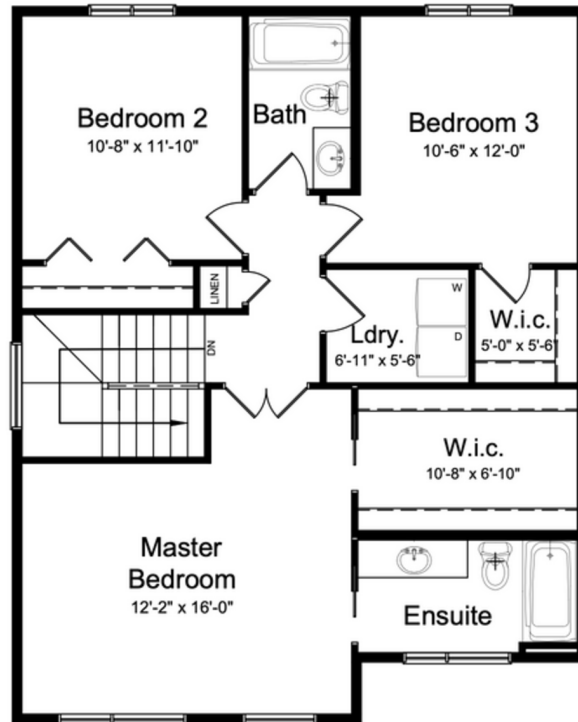
— THE KOYA —

- 1870
SQ. FT
- 2
STORY
- 4
BED
- 3
BATH



Main Floor Plan ~ 924 sq. ft.
Upper Floor Plan ~ 946 sq. ft.
Total Area ~ 1870 sq. ft.

Main Floor Plan ~ 902 sq. ft.



Upper Floor Plan ~ 946 sq. ft.

OPTIONAL FEATURES

- UPGRADED WINDOWS
- UPGRADED BRICK VENEER & EXTENSION OF BRICK VENEER PILLARS



CONTACT

- info@kscustomhomes.ca
- www.kscustomhomes.ca

*For marketing purposes only.
*Floorplans subject to updates.

— THE KOYA

1870	2	4	3
SQ. FT	STORY	BED	BATH